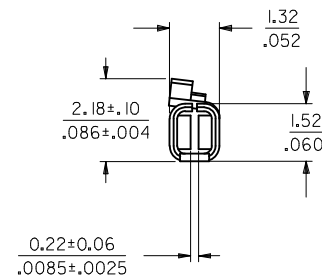
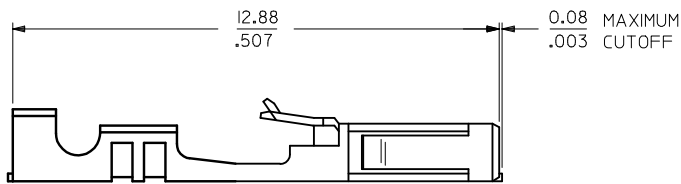
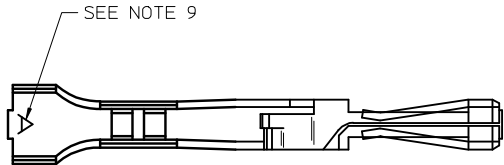
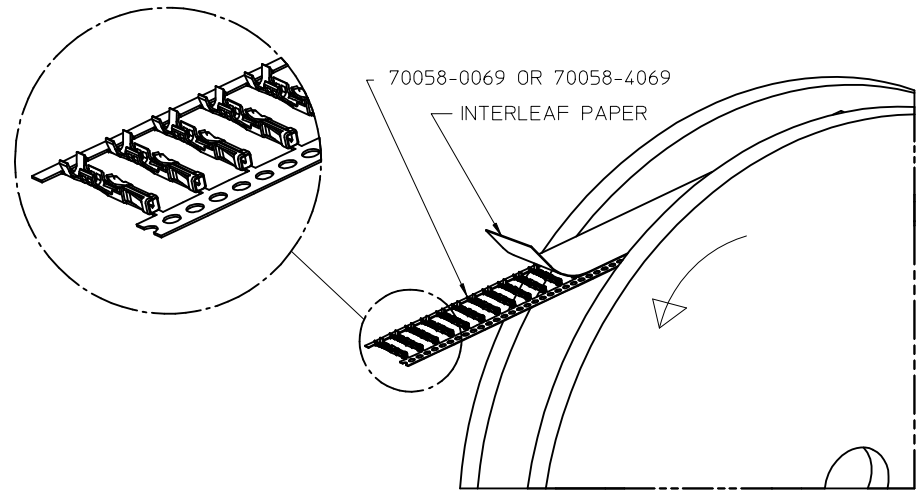


ITEM NUMBER	FINISH	NOTES
70058-0069	POST-PLATE	ALL EDGES COVERED BY PLATING EXCEPT FOR CUT-OFFS OF THE CARRIERS.
70058-4069	PRE-PLATE	ALL CUT EDGES WILL BE EXPOSED AND WILL NOT HAVE PLATING.



- NOTES:
1. TERMINAL MATERIAL: PHOSPHOR BRONZE.
  2. FINISH: POST-PLATE: 3.81 MICROMETERS/150 MICROINCHES MINIMUM TIN (Sn) IN CONTACT AREA; 1.91 MICROMETERS/75 MICROINCHES MINIMUM TIN (Sn) IN CRIMP AREA; NICKEL UNDERPLATE OVERALL.  
PRE-PLATE: 3.81 MICROMETERS/150 MICROINCHES MINIMUM TIN (Sn) OVER NICKEL UNDERPLATE OVERALL.
  3. TERMINAL TO BE USED IN HOUSING 70066-\*\*\*\* AND 70450-\*\*\*\*.
  4. REFER TO PRODUCT SPECIFICATION PS-70058.
  5. REFER TO MOLEX OPERATIONS AND SERVICE MANUAL FOR CRIMP DETAILS.
  6. TERMINAL TO BE USED WITH 0.64/.025 SQUARE PINS.
  7. TERMINAL TO BE USED WITH 24-30 AWG STRANDED WIRE WITH 152/.060 MAXIMUM DIAMETER INSULATION.
  8. TERMINALS SUPPLIED IN REEL FORM PER PK-70873-1300.
  9. CRIMP SIZE INDICATOR A=24-30 AWG.

REEL UNWIND DIR EC NO: UCP2013-5345 DRWR:RHIPPLE 2013/06/11 CHKD:DMORGAN 2013/06/11 APPR:SMILLER 2013/07/09	DESCRIPTION REV 1	QUALITY SYMBOLS	GENERAL TOLERANCES (UNLESS SPECIFIED)	DIMENSION STYLE	SCALE	DESIGN UNITS	THIRD ANGLE PROJECTION
		▽=0	mm INCH	MM/IN	10:1	INCH	TITLE <b>TERMINAL - BOX/CRIMP FOR 24-30 AWG ON A REEL</b> <b>molex</b> DOCUMENT NO. SD-70058-069 SHEET NO. 1 OF 1
		▽=0	4 PLACES ± --- ± ---	DRAWN BY DATE	MATERIAL NO. <b>SEE TABLE</b>		
		▽=0	3 PLACES ± --- ± .005	CHECKED BY DATE			
	2 PLACES ± 0.13 ± .010	DMORGAN 2006/06/30					
	1 PLACE ± 0.25 ± ---	APPROVED BY DATE					
	0 PLACE ± ±	SMILLER 2006/06/30					
ANGULAR ±1/2°			DRAFT WHERE APPLICABLE MUST REMAIN WITHIN DIMENSIONS		THIS DRAWING CONTAINS INFORMATION THAT IS PROPRIETARY TO MOLEX INCORPORATED AND SHOULD NOT BE USED WITHOUT WRITTEN PERMISSION		